

voestalpine SadeF

Assembly Guideline FlexPark®

Table of Contents

» Table of Contents	p.2
» General Informations	p.3
» General Conditions	p.4
» FlexPark SOUTH and NORTH	p.5
➤ Supporting the voestalpine SadeF structure	p.6
➤ Assembly voestalpine SadeF structure - FlexPark	p.7
» FlexPark SOUTH and NORTH Heavy	p.19
➤ Supporting the voestalpine SadeF structure	p.20
➤ Assembly voestalpine SadeF structure – FlexPark Heavy	p.21

General Informations

Cabling is out of scope of this document and is the responsibility of the voestalpine SadeF customer.

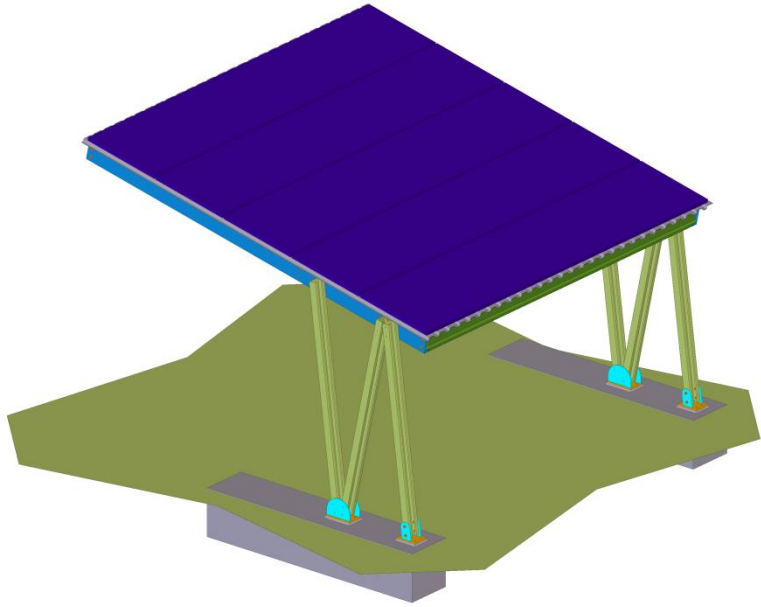
The information given in this document on safety and working method is provided as guidance and for information only. It is the full responsibility of the voestalpine SadeF customer and his mounting company to do the erection of the structures in a professional and safe way, following the composition of the assemblies given in this document and the drawings quoted above and following the national regulations and standards of the country where the project will be built.

voestalpine SadeF is not responsible for any damage that might be caused by missing or not properly mounted parts. Please read the guidelines before starting to assemble the parts. You can always contact us if there are some questions left regarding this document and the assembly of the structure. If the voestalpine SadeF customer adapts the voestalpine SadeF delivered frame without prior written permission by voestalpine SadeF, then the voestalpine SadeF customer automatically takes all responsibility for the stability, functionality and performance of the voestalpine SadeF frame.

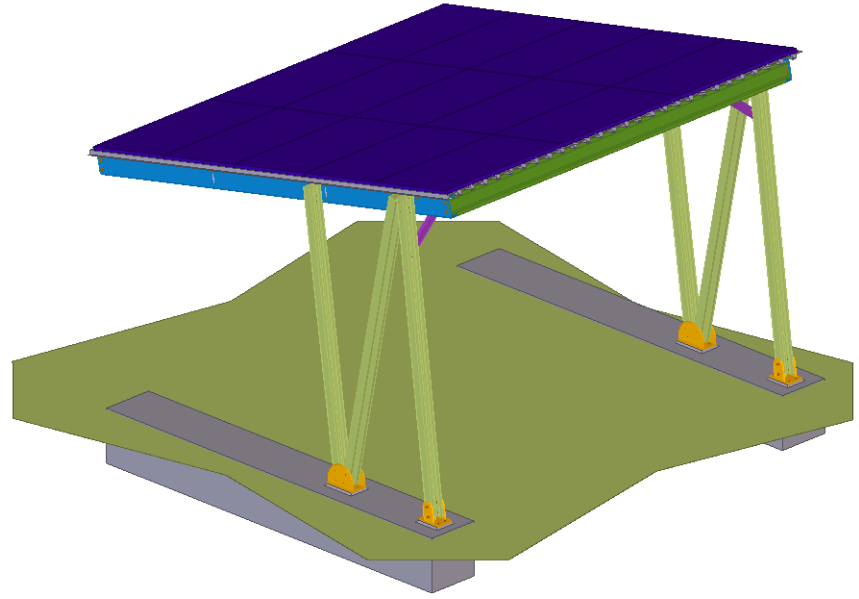
General Conditions

» Please pay attention to following general guidelines:

- » **The FlexPark® product needs to be installed in accordance with the structural drawing(s) and assembly guidelines provided by voestalpine Sadef.**
- » Read all the instructions in the assembly guideline carefully before assembling the structure.
- » These assembly instructions are subject to changes without prior notice, therefore please contact voestalpine Sadef to ensure the instructions are up-to-date. voestalpine Sadef reserves the right to refuse liability if these general conditions and the assembly instructions are not respected.
- » It is the entire responsibility of the voestalpine Sadef distributor/customer to verify the compatibility and loading capacity of the used PV-module and its fixing to the corresponding voestalpine Sadef steel frame.
- » The correct tools need to be used for assembling the structure without damaging the components. Do not use non-specified materials. Systems may only be installed by properly trained and technically suitable people.
- » For all the mutual holes in the connections between voestalpine Sadef profiles, the appropriate bolts and nuts need to be applied. Bolts and nuts should be sufficiently tightened with the specified torque.
- » The system can be dismantled in accordance to the reverse steps of this assembly instruction document.

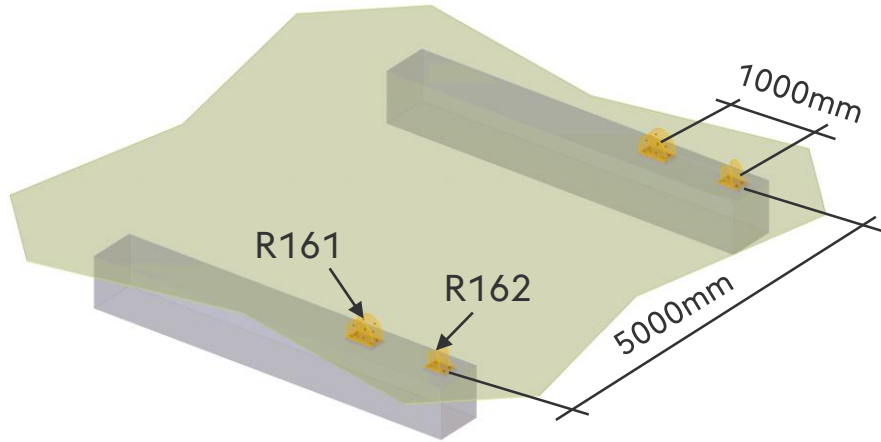


FlexPark SOUTH

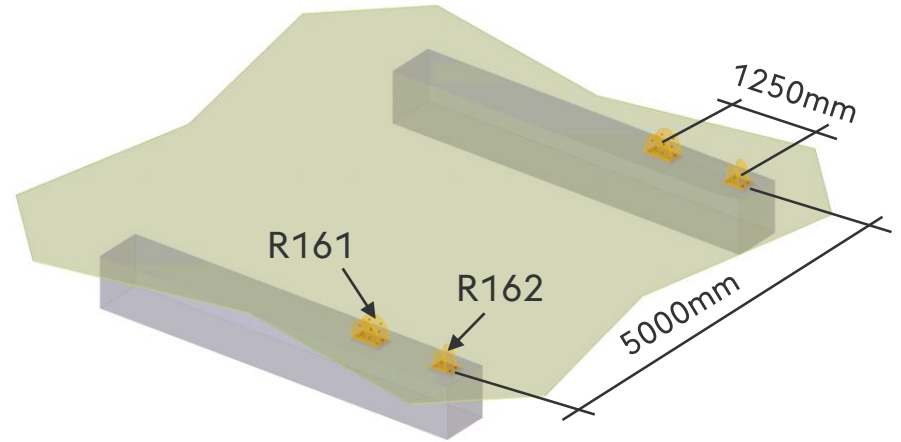


FlexPark NORTH

Supporting the voestalpine SadeF systems



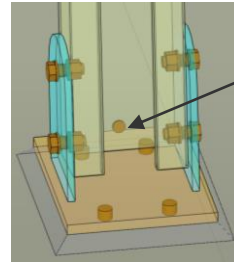
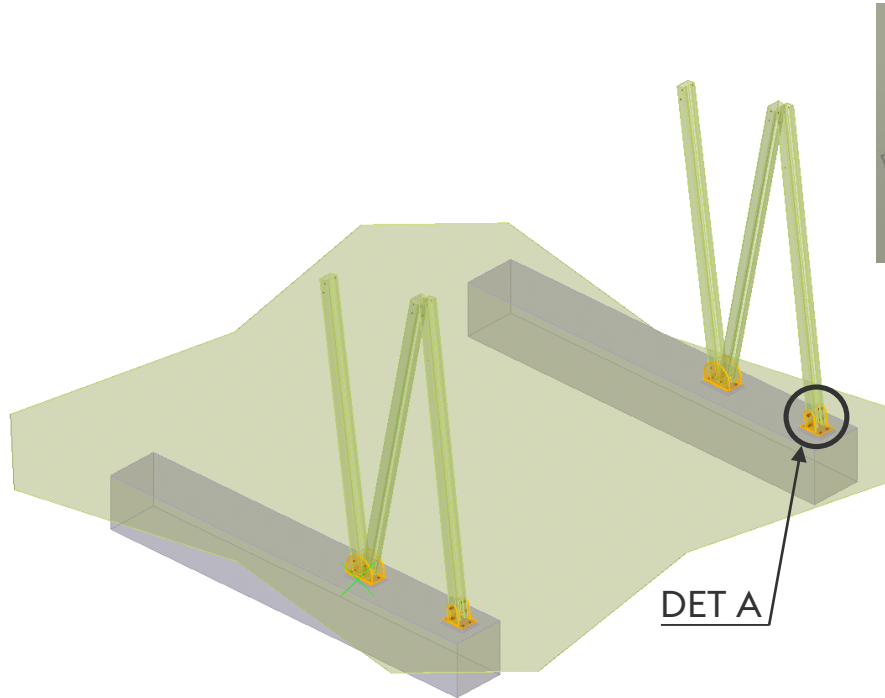
FlexPark SOUTH



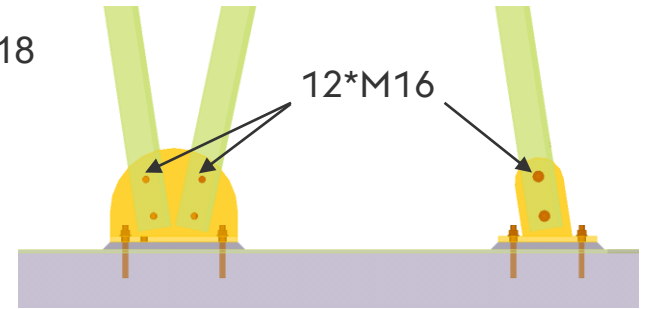
FlexPark NORTH

Connect the foot plates (R161 and R162) with 4 anchors M16 to the concrete block.

voestalpine Sadef Structure



DETAIL A



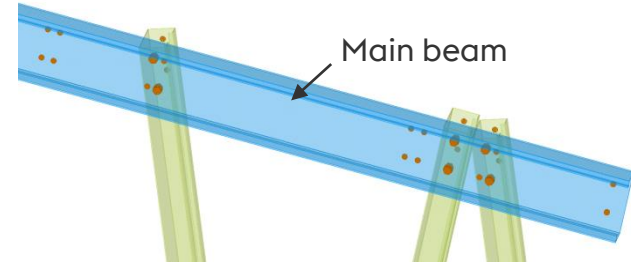
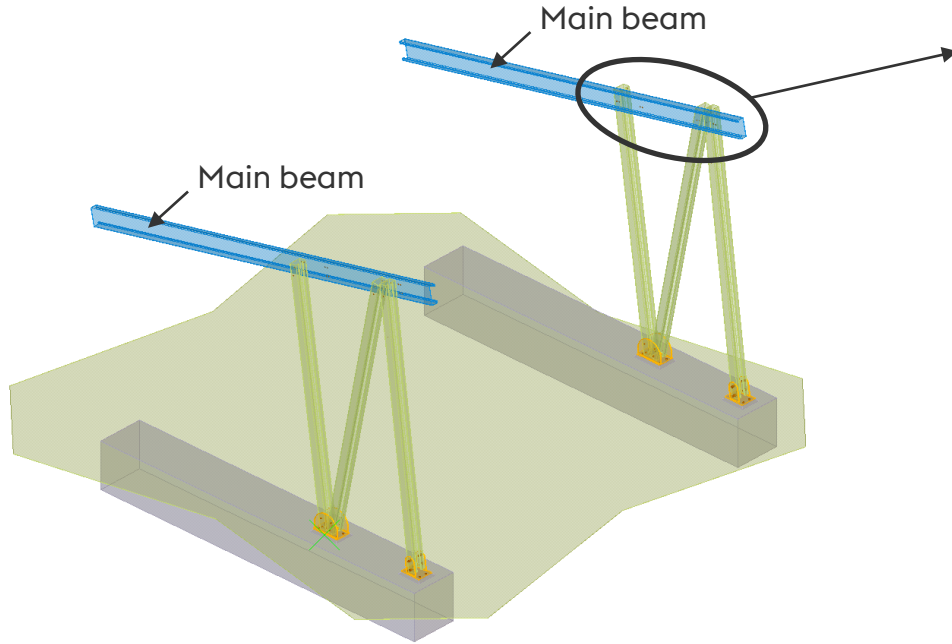
Bolt the columns using M16 bolts.
 Columns should be positioned with the round hole
 Ø18 in web at bottom side (see DET A).
 The bolts M16 should be positioned at the side
 of the foot plates (R161, R162), the nuts at the side
 of the columns.

Don't tighten the bolts yet!

voestalpine

ONE STEP AHEAD.

voestalpine Sadef Structure



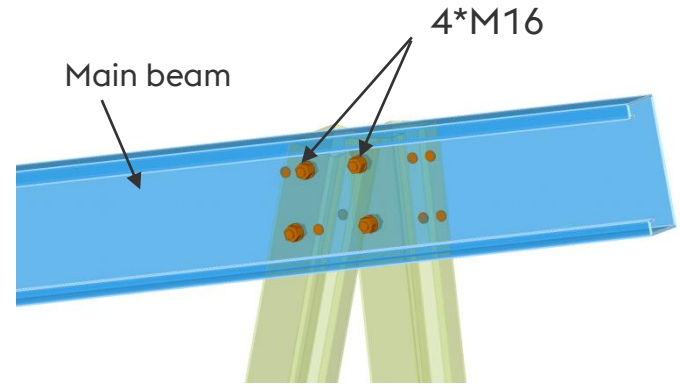
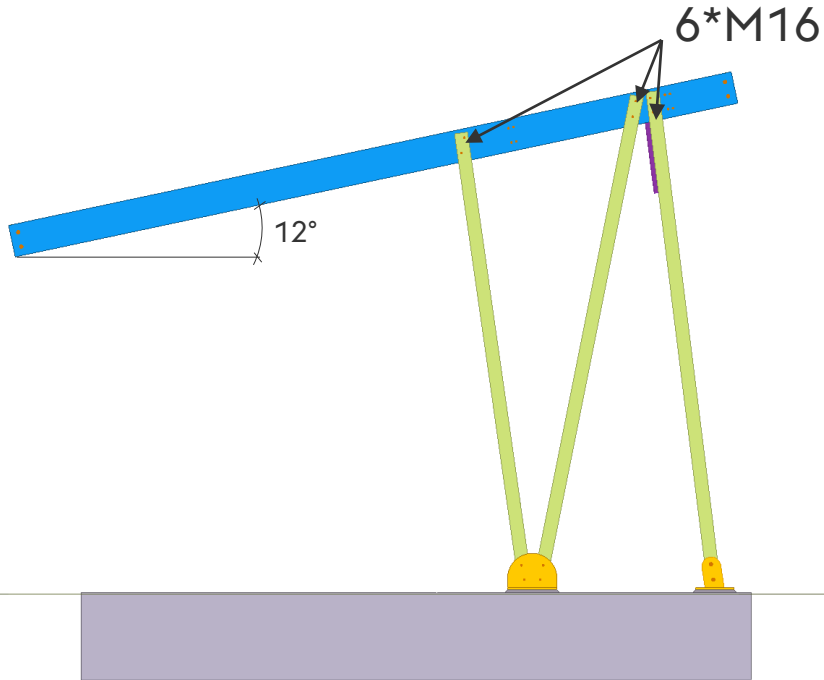
Bolt the main beams to columns using M16 bolts.

Don't tighten the bolts yet!



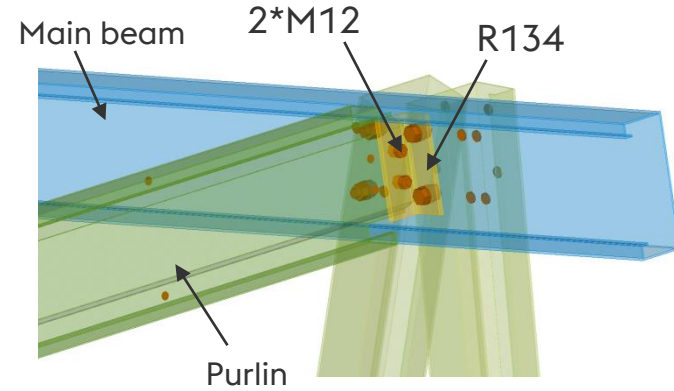
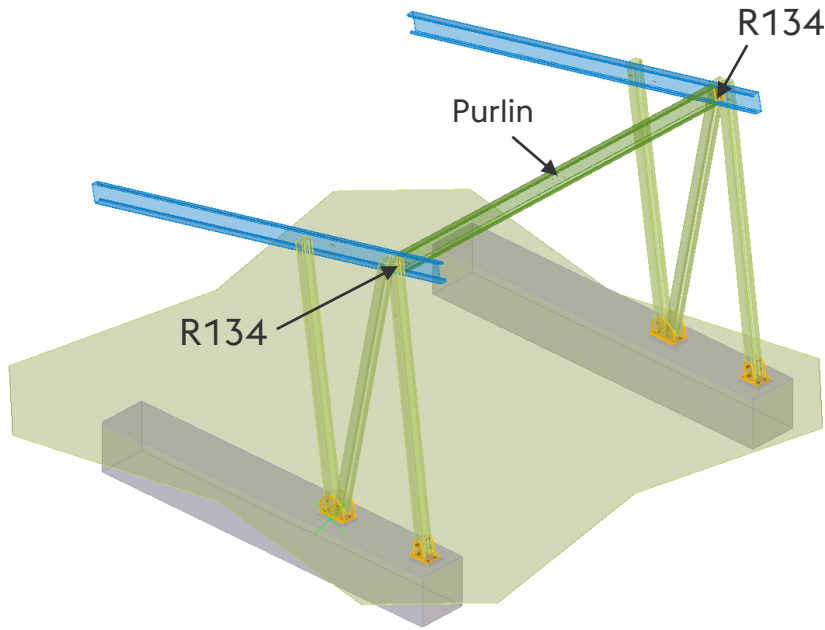
Additional temporary supports of frames may be needed.

voestalpine Sadef Structure



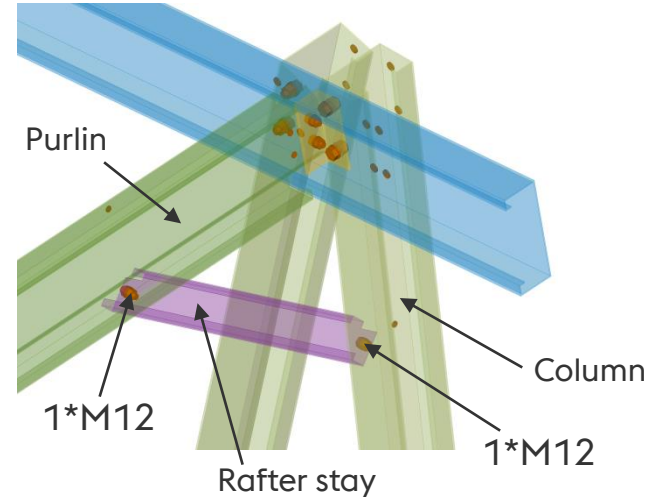
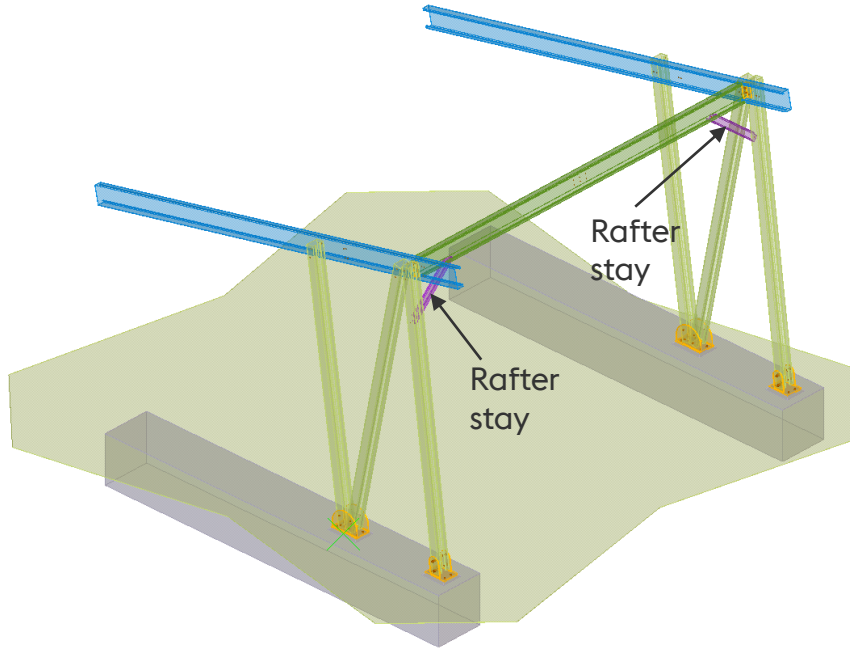
Before tightening bolted connections take care of the right pitch of main beams, which should be equal to 12° referring to horizontal direction.

voestalpine Sadef Structure



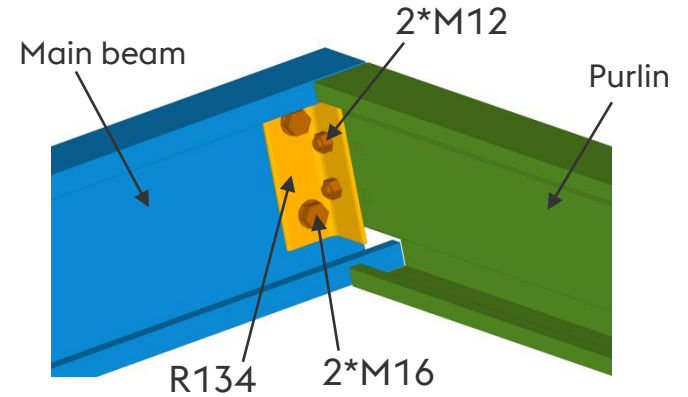
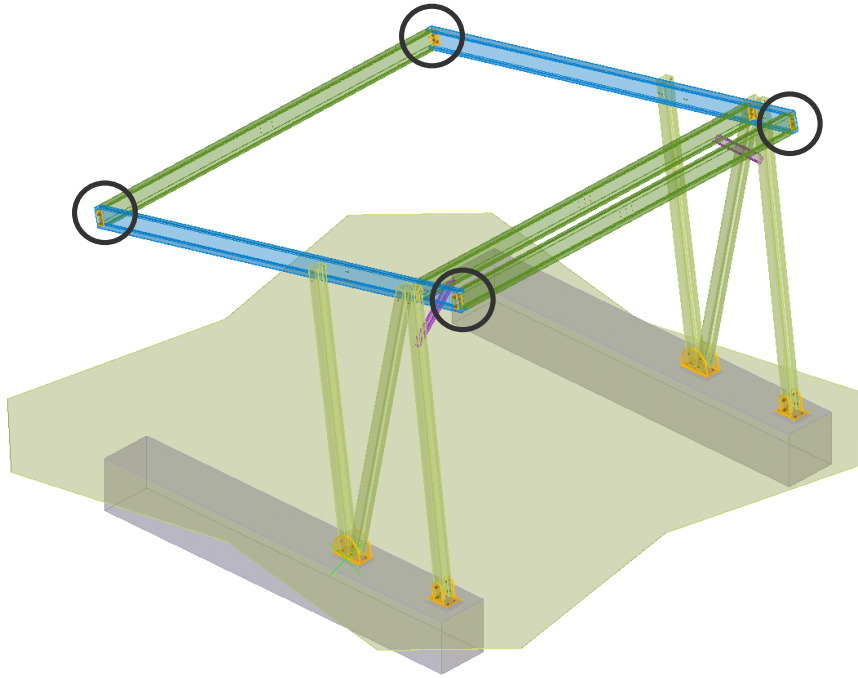
Fix connecting element R134 to the main beam and column with previously used M16 bolts.
 Connect purlin to the R134 element using M12 bolts.
Don't tighten the bolts yet!

voestalpine SadeF Structure



Connect rafter stay to the purlin and to the column using M12 bolts.
Don't tighten the bolts yet!

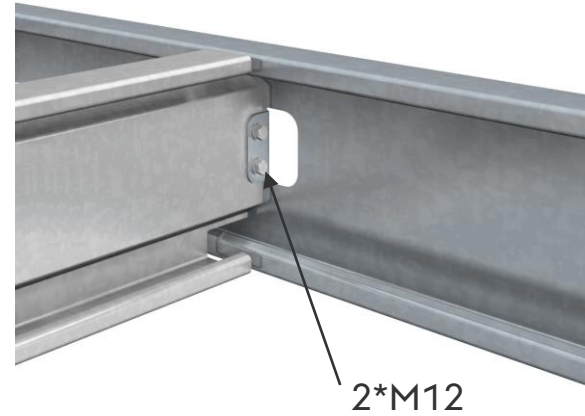
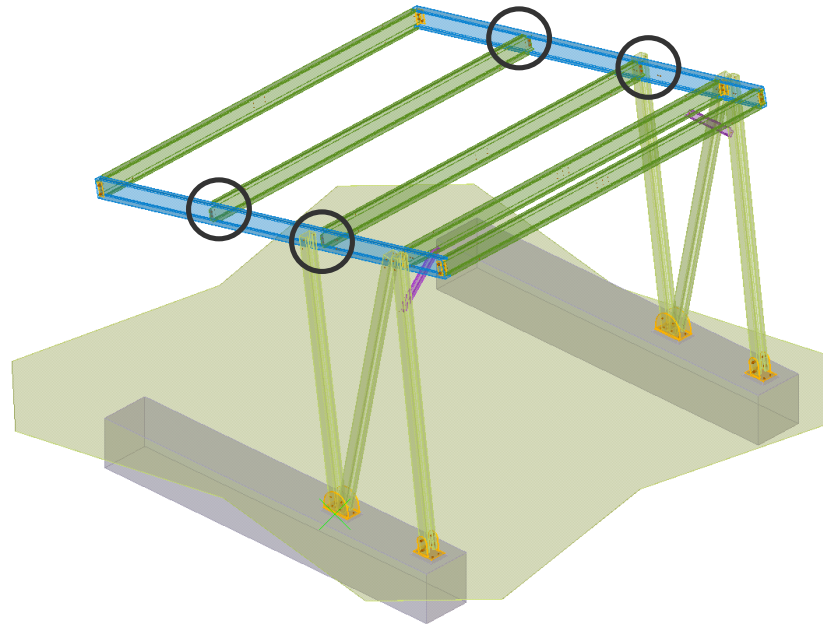
voestalpine Sadef Structure



Connect main beams and purlins with R134 elements using M12 and M16 bolts.

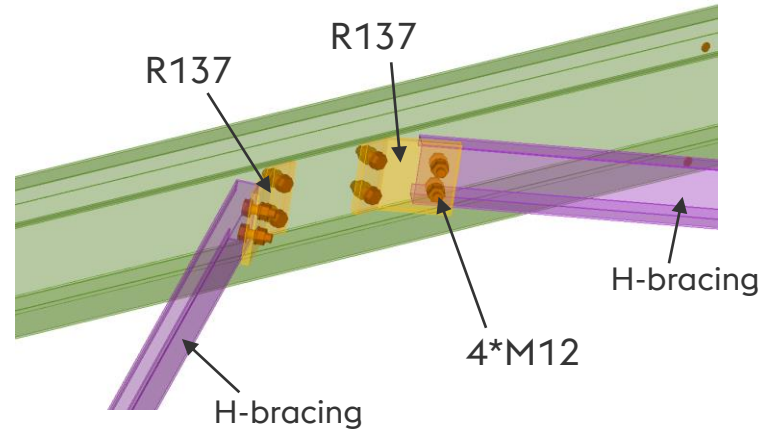
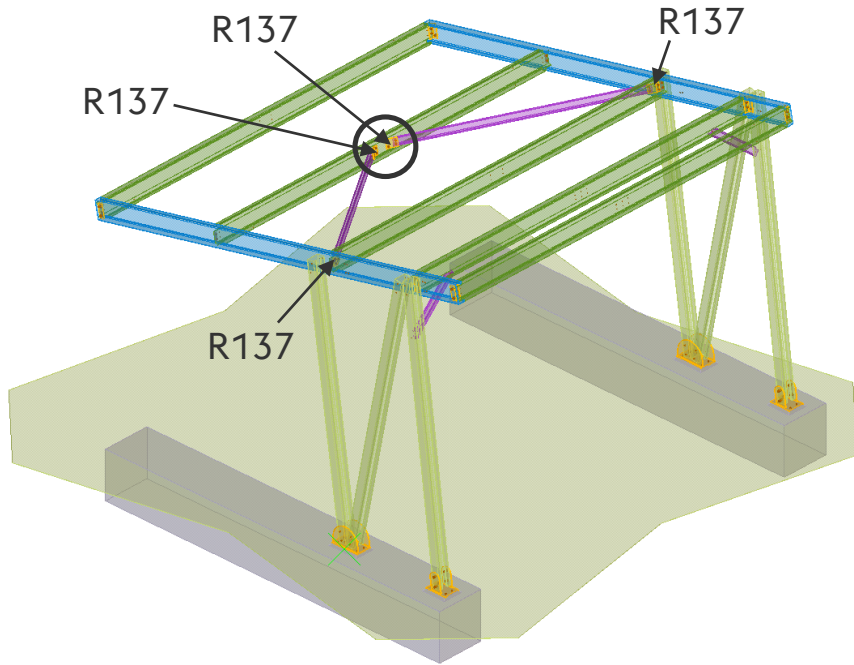
Don't tighten the bolts yet!

voestalpine SadeF Structure



Connect 2 remaining purlins with main beam using M12 bolts.
Don't tighten the bolts yet!

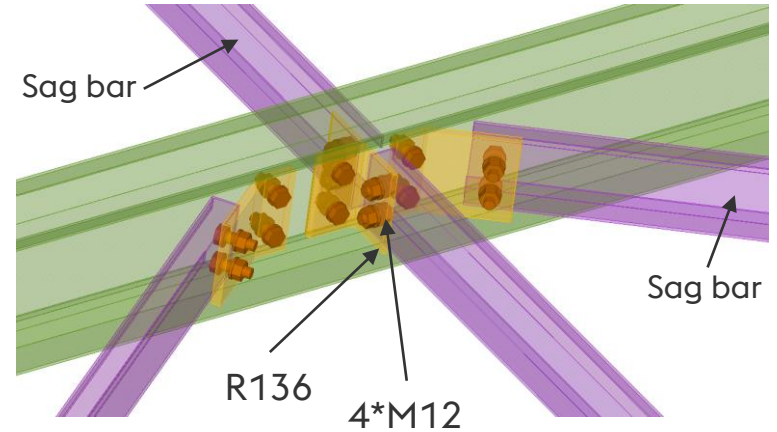
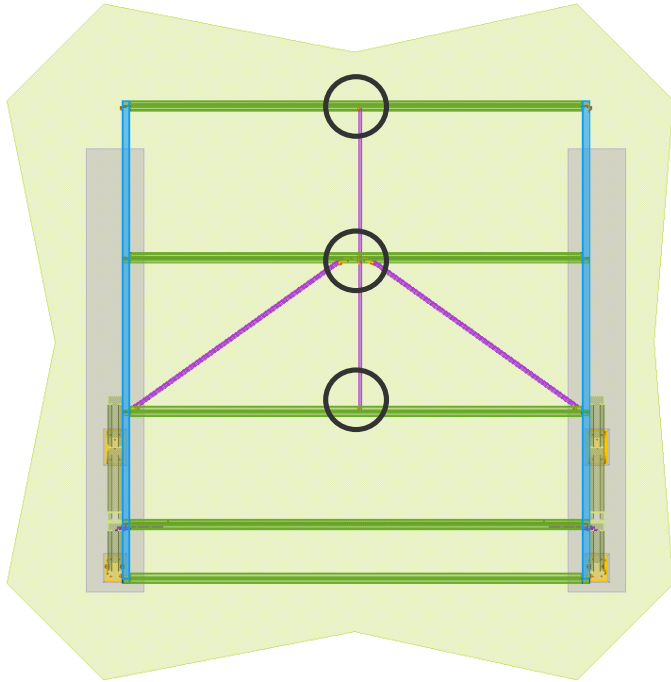
voestalpine SadeF Structure



Connect horizontal bracings with purlins using M12 bolts and R137 connecting elements.

Don't tighten the bolts yet!

voestalpine Sadef Structure



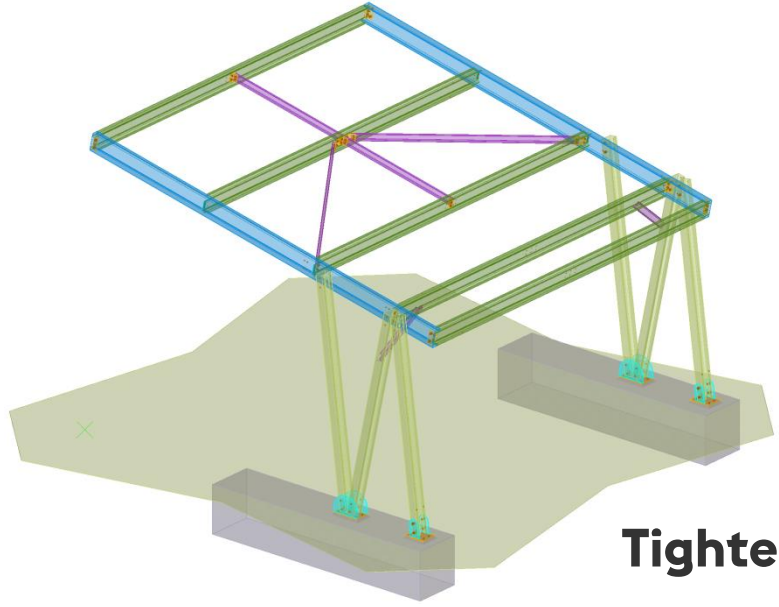
Connect sag bars with purlins using M12 bolts and R136 elements.

Don't tighten the bolts yet!

voestalpine

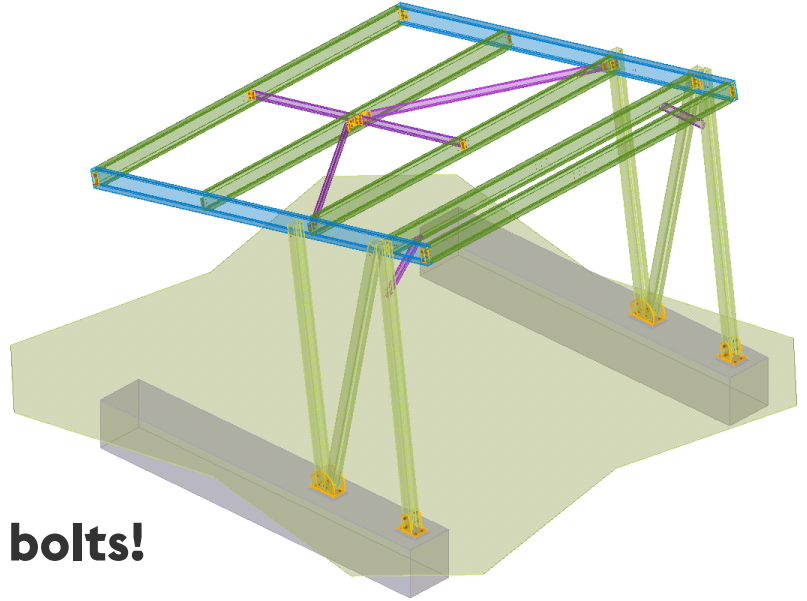
ONE STEP AHEAD.

voestalpine Sadef Structure



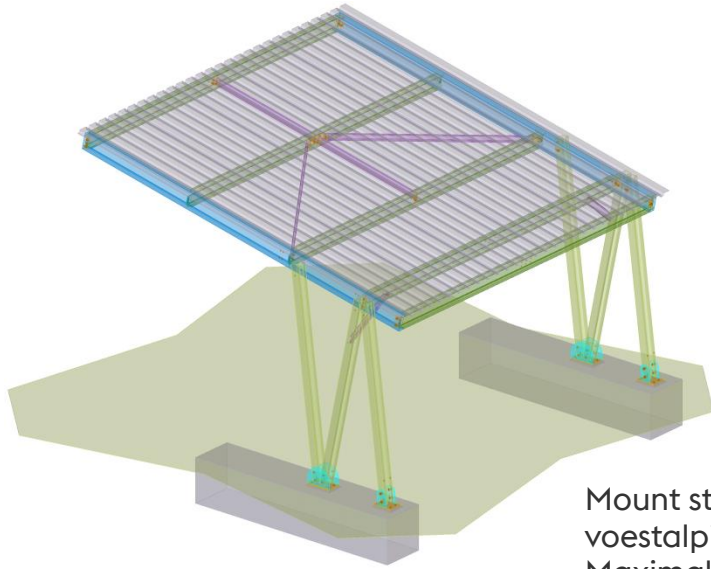
FlexPark SOUTH

Tighten the bolts!



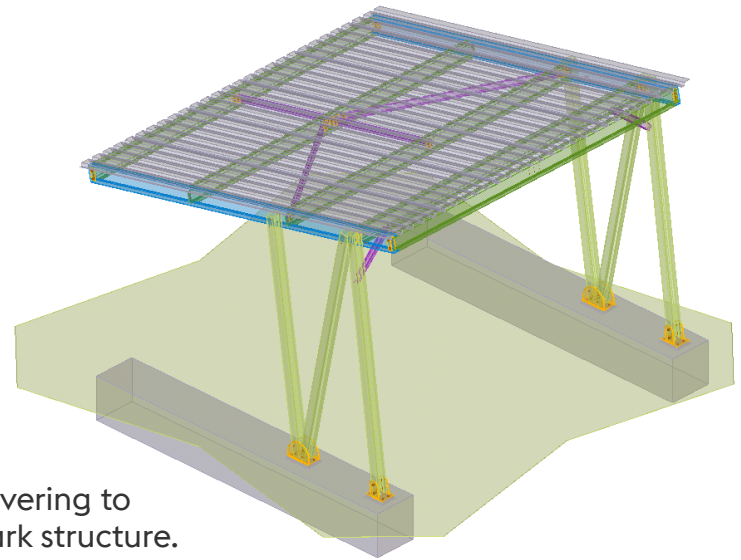
FlexPark NORTH

voestalpine Sadef Structure



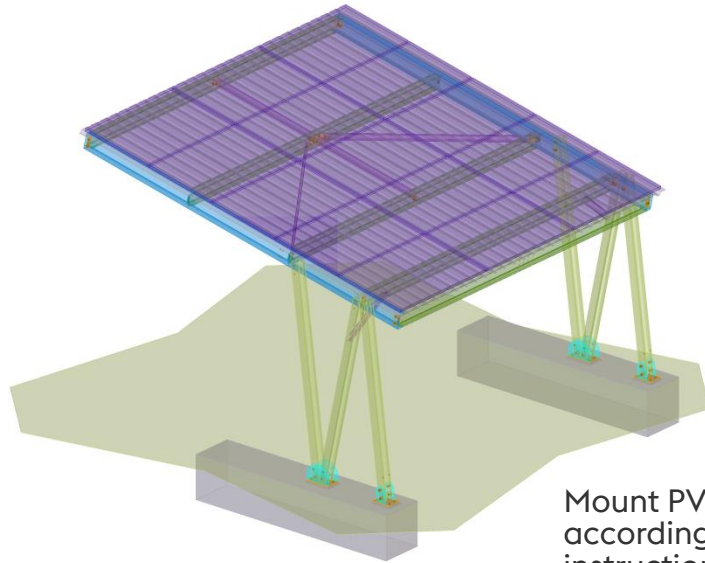
FlexPark SOUTH

Mount steel sheet roofcovering to voestalpine Sadef FlexPark structure. Maximal distance between screws is 0,33m. Top of roof covering and screws is full responsibility of voestalpine Sadef customer.



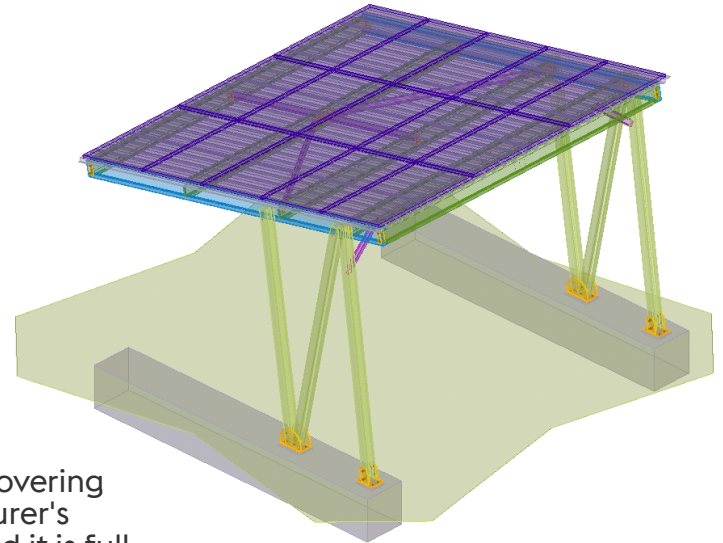
FlexPark NORTH

voestalpine SadeF Structure

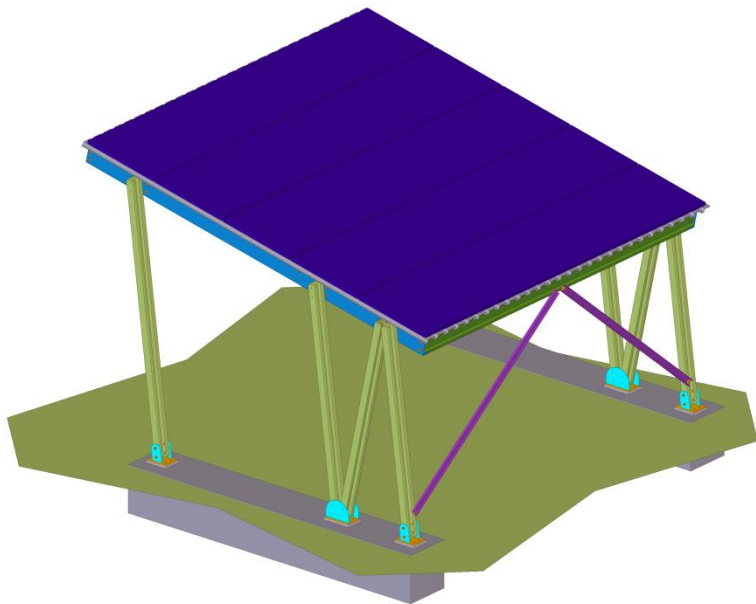


FlexPark SOUTH

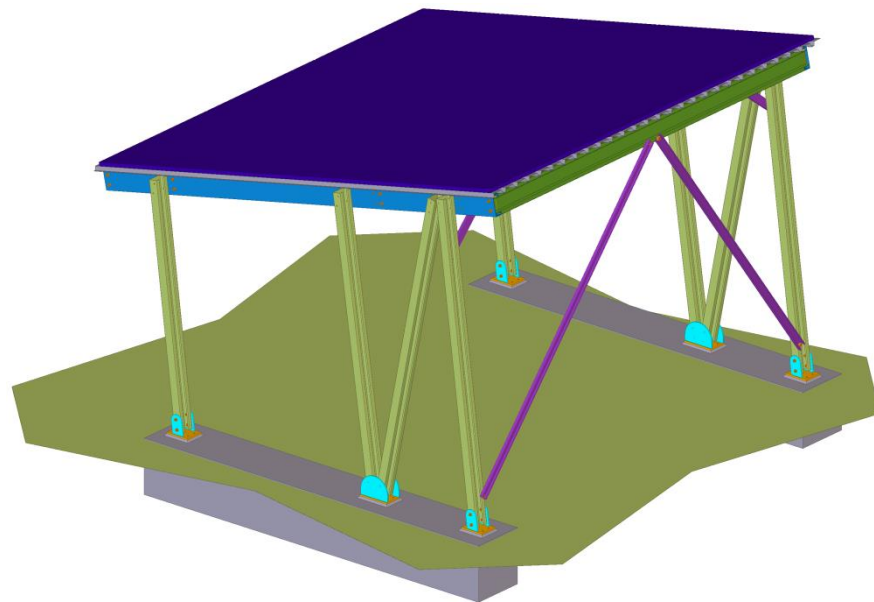
Mount PV-modules to roofcovering according to the manufacturer's instruction (out of scope) and it is full responsibility of voestalpine SadeF customer.



FlexPark NORTH

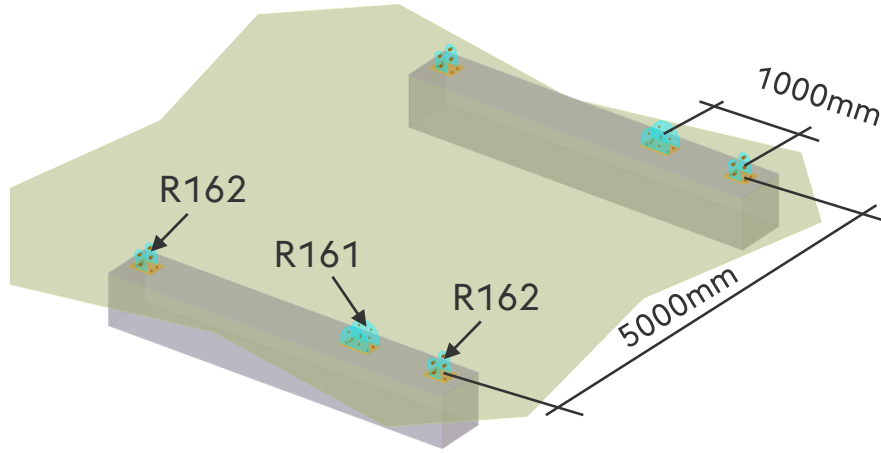


FlexPark SOUTH Heavy

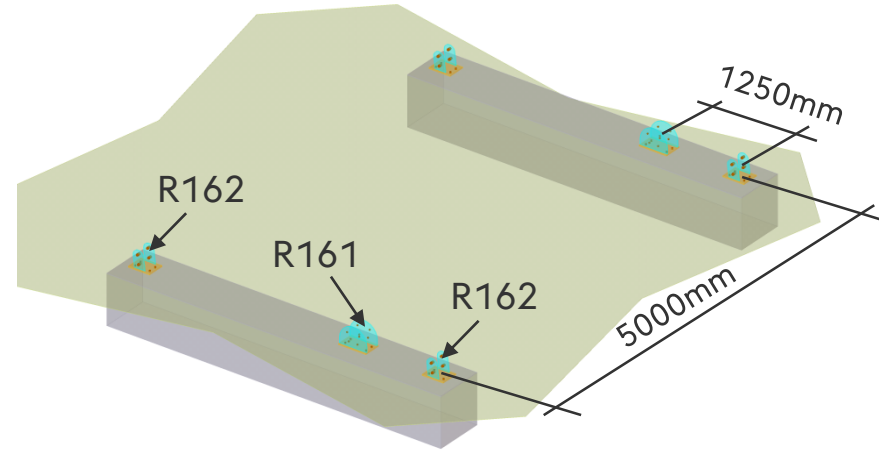


FlexPark NORTH Heavy

Supporting the voestalpine SadeF systems



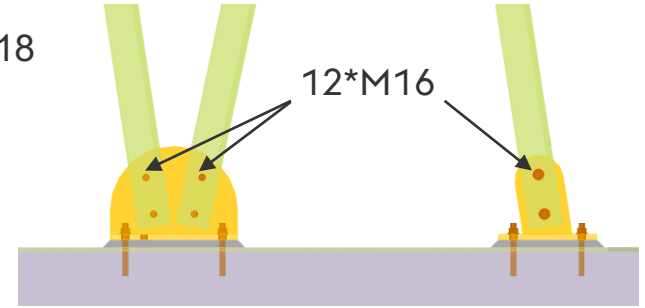
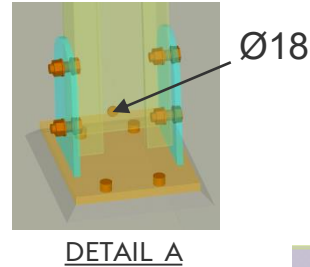
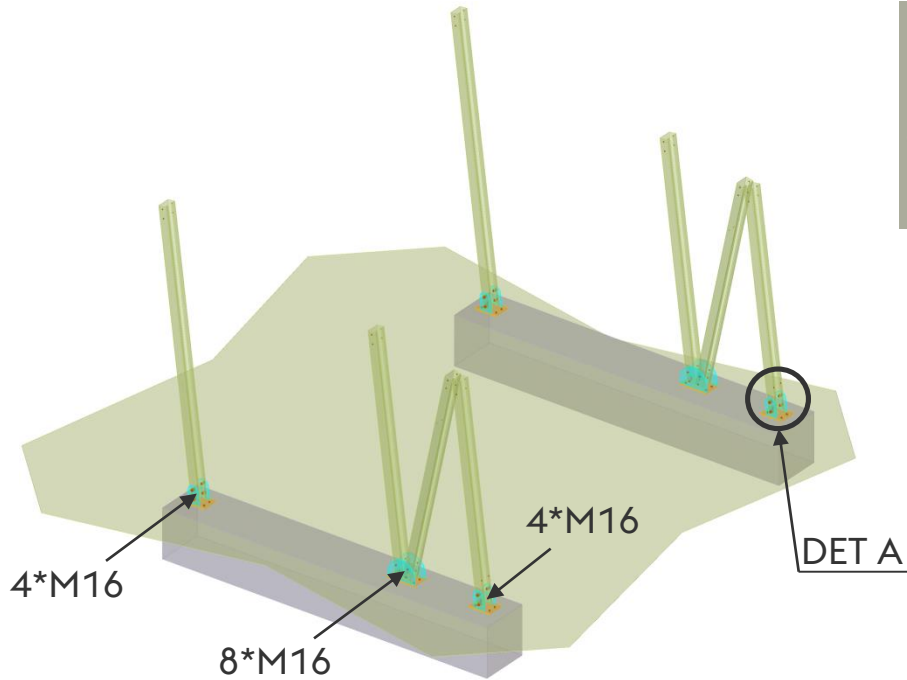
FlexPark SOUTH Heavy



FlexPark NORTH Heavy

Connect the foot plates (R161 and R162)
with 4 anchors M16 to the concrete block.

voestalpine Sadef Structure



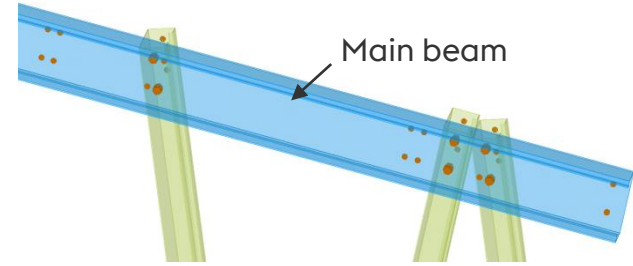
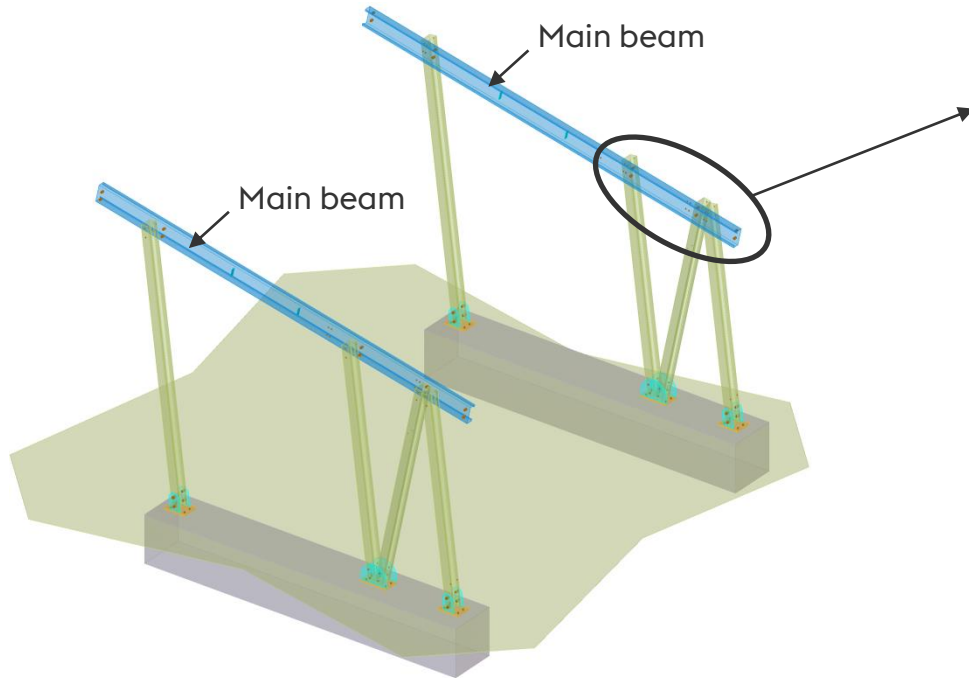
Bolt the columns using M16 bolts.
 Columns should be positioned with the round hole $\text{Ø}18$ in web at bottom side (see DET A).
 The bolts M16 should be positioned at the side of the foot plates (R161, R162), the nuts at the side of the columns.

Don't tighten the bolts yet!

voestalpine

ONE STEP AHEAD.

voestalpine Sadef Structure



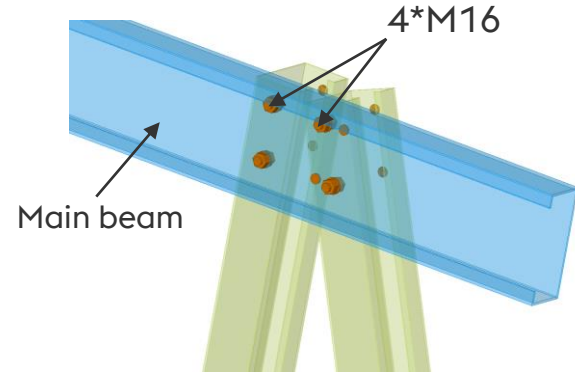
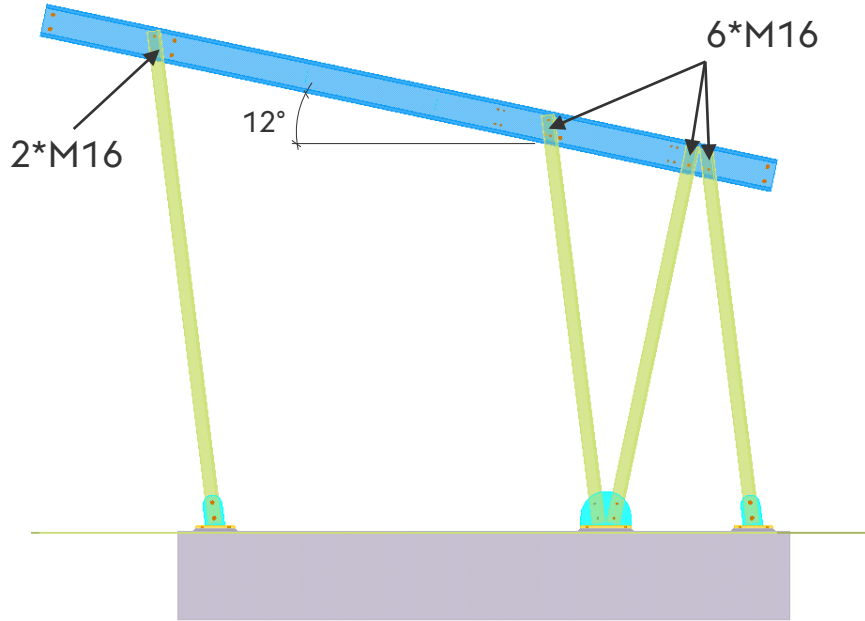
Bolt the main beams to columns using M16 bolts.

Don't tighten the bolts yet!



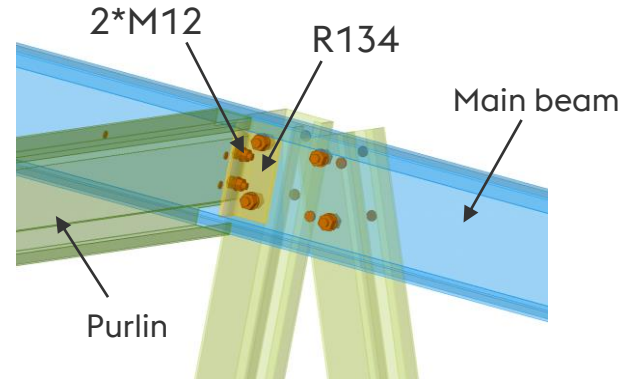
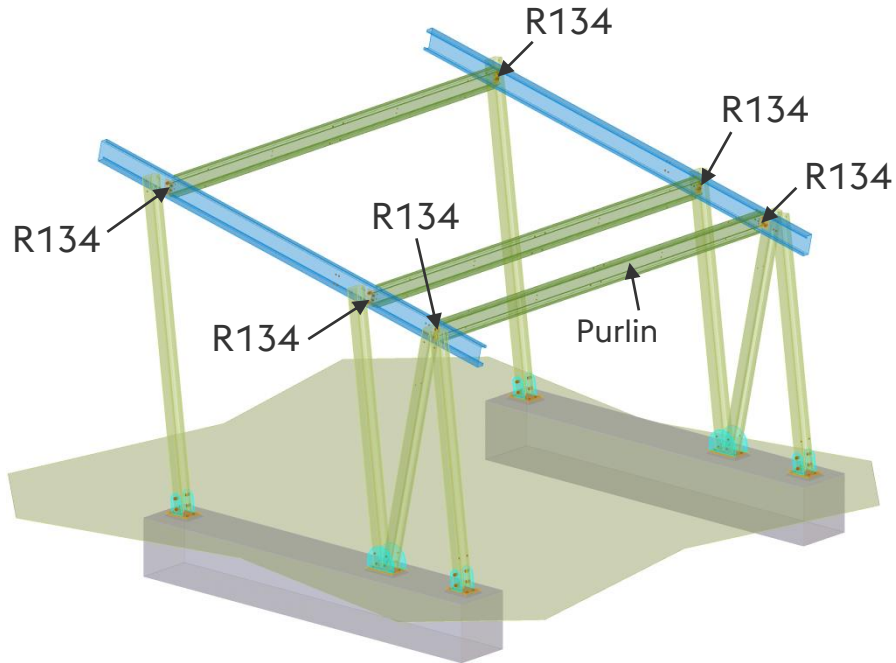
Additional temporary supports of frames may be needed.

voestalpine Sadef Structure



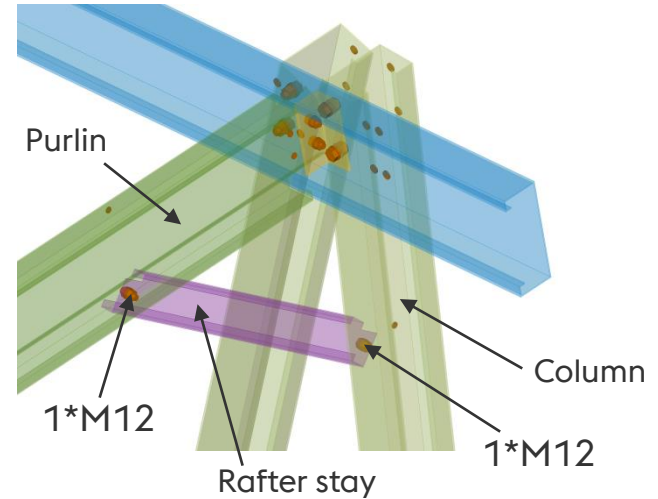
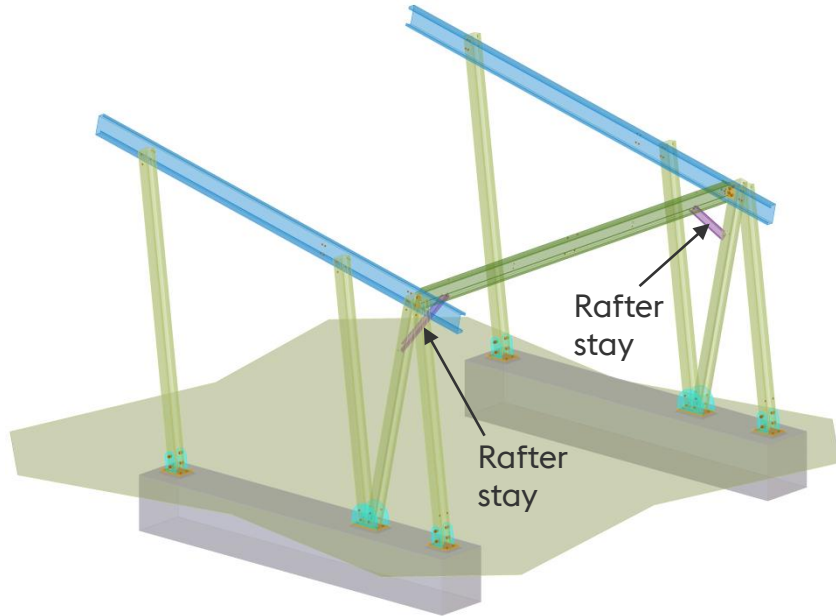
Before tightening bolted connections take care of the right pitch of main beams, which should be equal to 12° referring to horizontal direction.

voestalpine Sadef Structure



Fix connecting elements R134 to the main beam (and column) with previously used M16 bolts. Connect purlins to the R134 element using M12 bolts. **Don't tighten the bolts yet!**

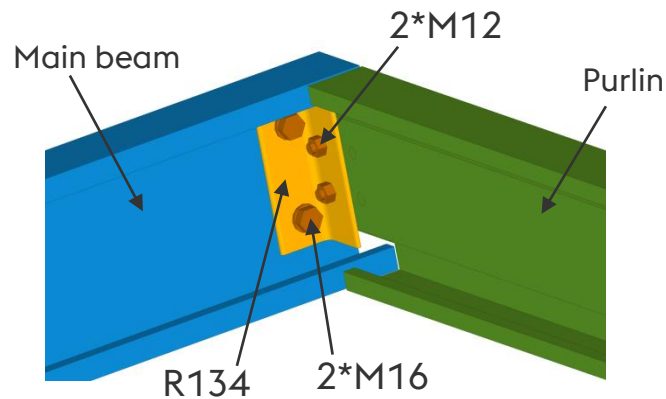
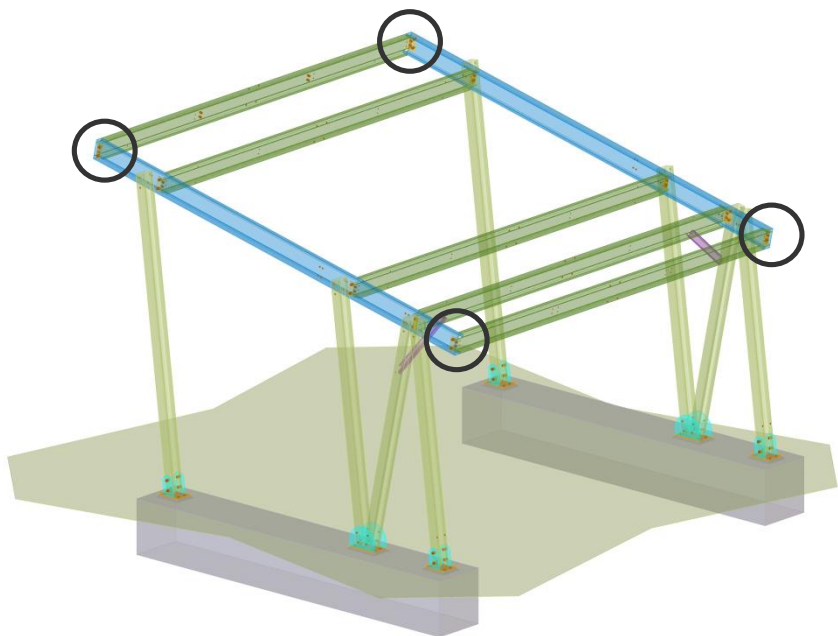
voestalpine Sadef Structure



Connect rafter stay to the purlin and to the column using M12 bolts.

Don't tighten the bolts yet!

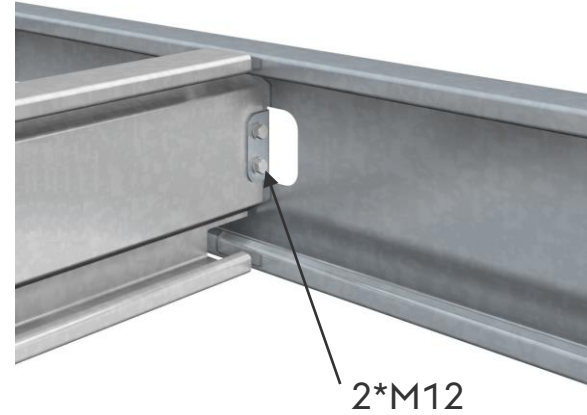
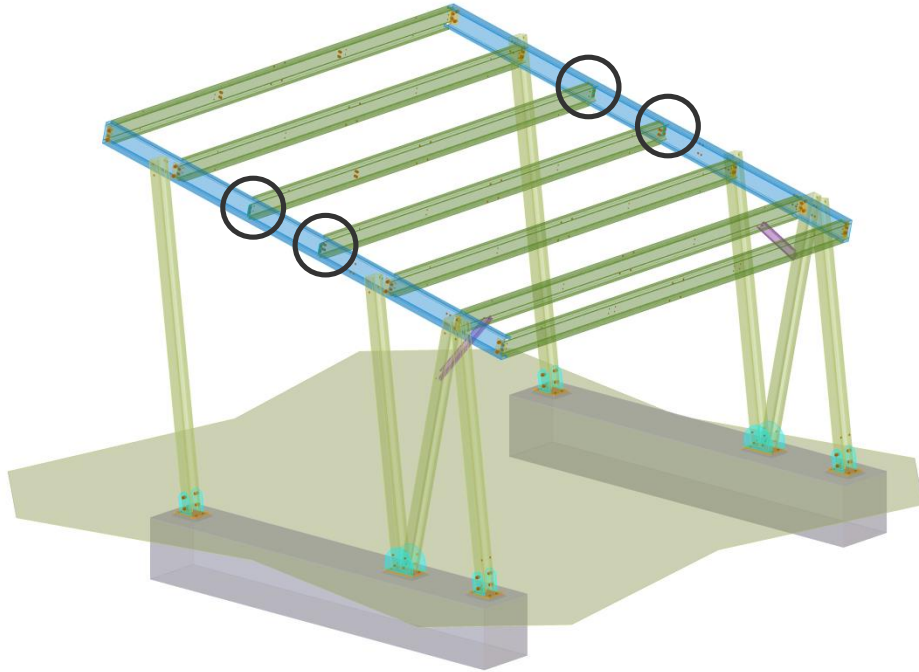
voestalpine Sadef Structure



Connect main beams and purlins with R134 elements using M12 and M16 bolts.

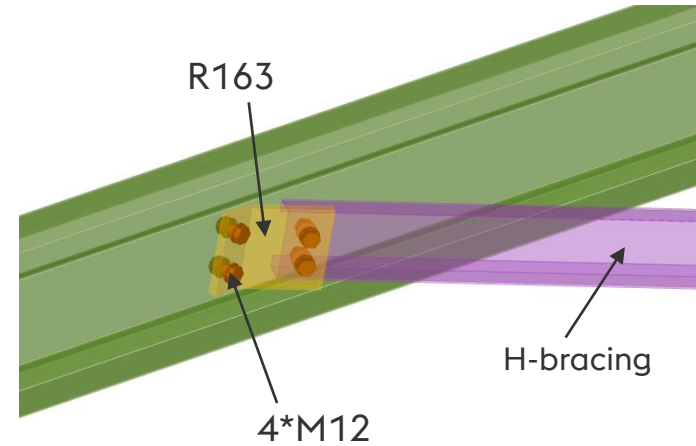
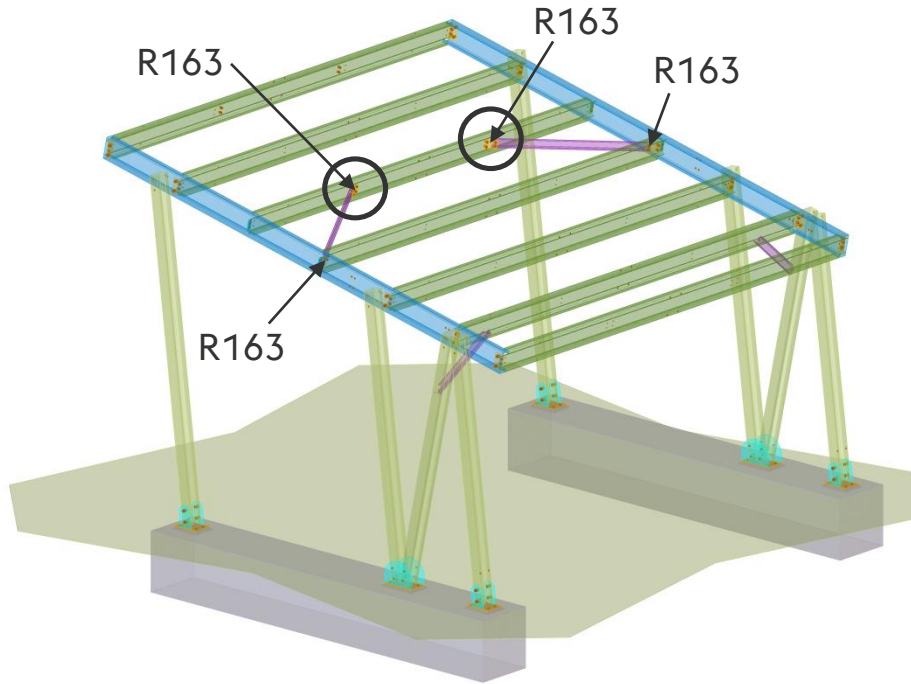
Don't tighten the bolts yet!

voestalpine Sadef Structure



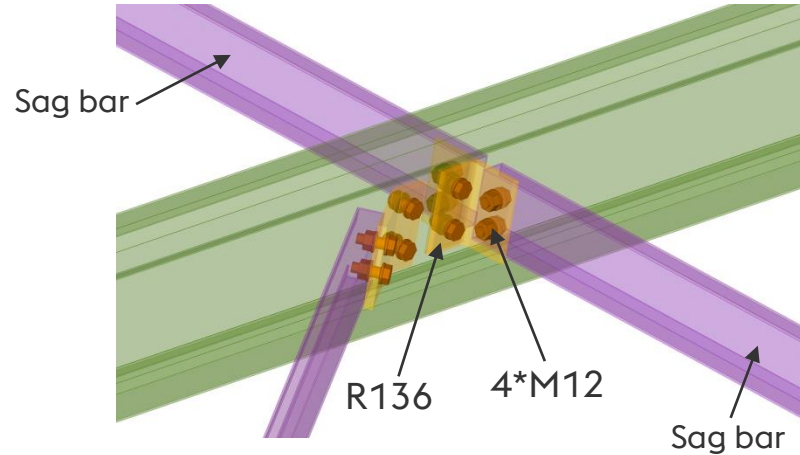
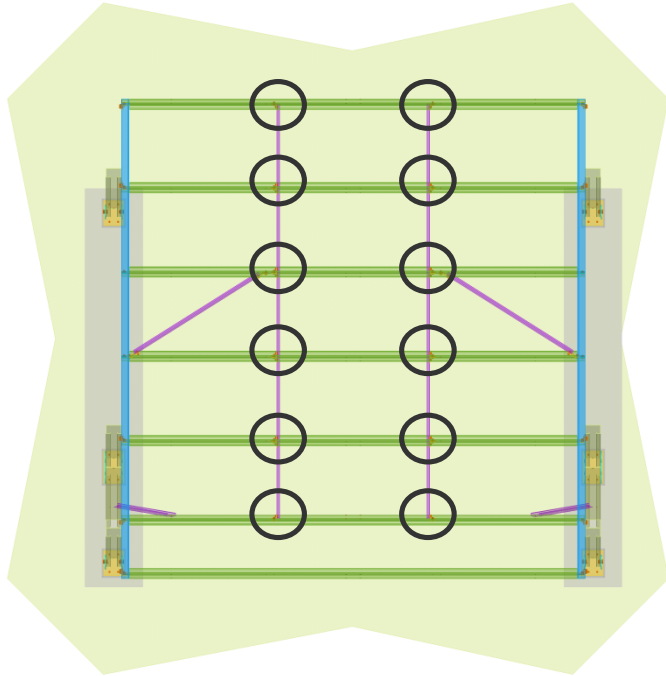
Connect 2 remaining purlins with main beam using M12 bolts.
Don't tighten the bolts yet!

voestalpine SadeF Structure



Connect horizontal bracings with purlins using M12 bolts and R163 connecting elements.
Don't tighten the bolts yet!

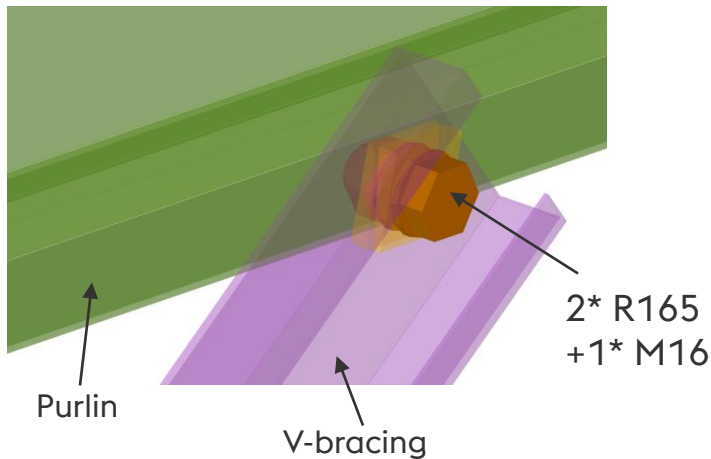
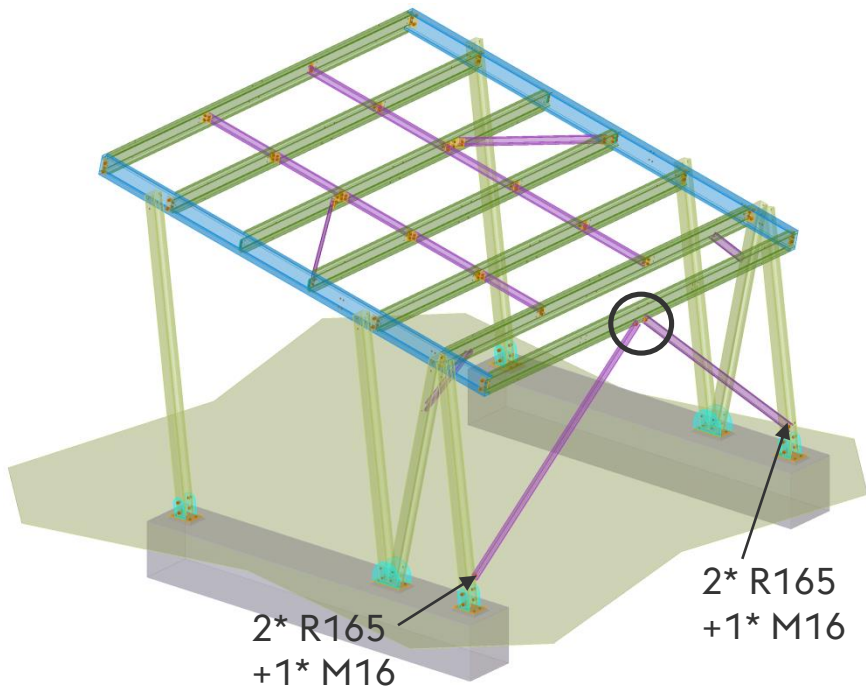
voestalpine Sadef Structure



Connect sag bars with purlins using M12 bolts and R136 elements.

Don't tighten the bolts yet!

voestalpine SadeF Structure

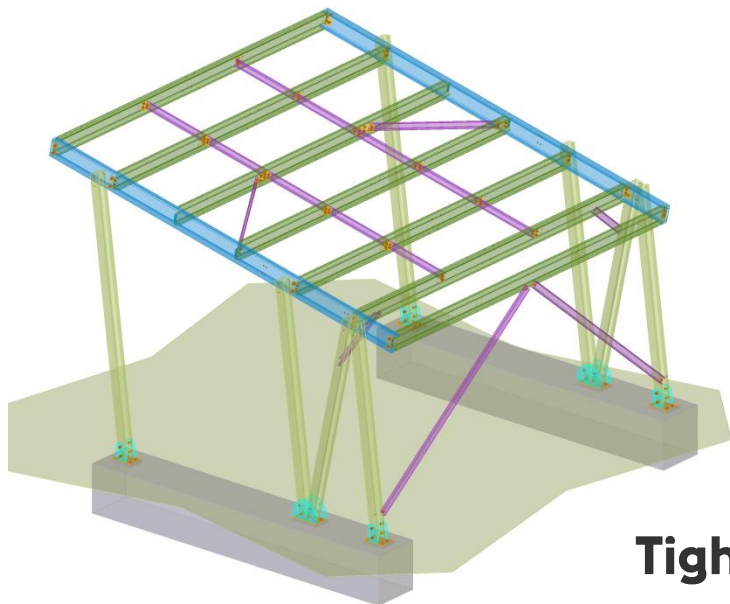


Connect vertical bracings with purlin and column using two R165 taper washers M16 and M16 bolt per connection.
Don't tighten the bolts yet!

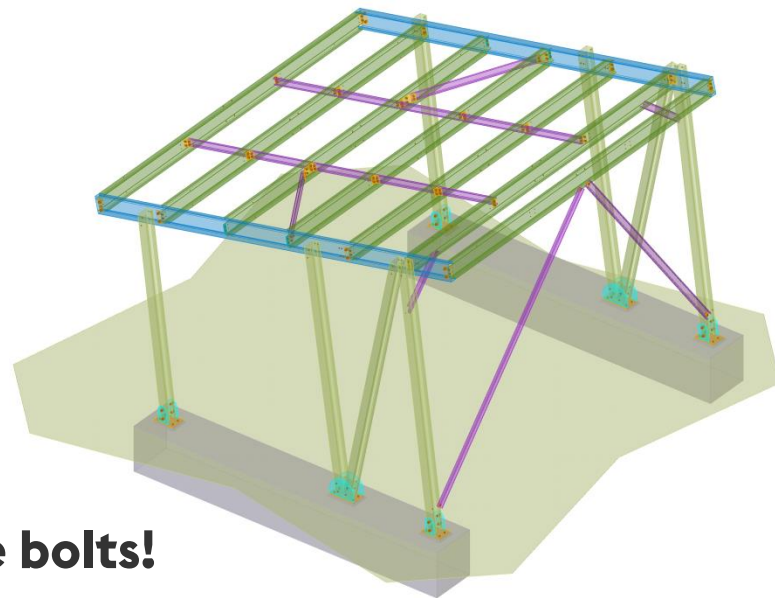
voestalpine

ONE STEP AHEAD.

voestalpine Sadef Structure



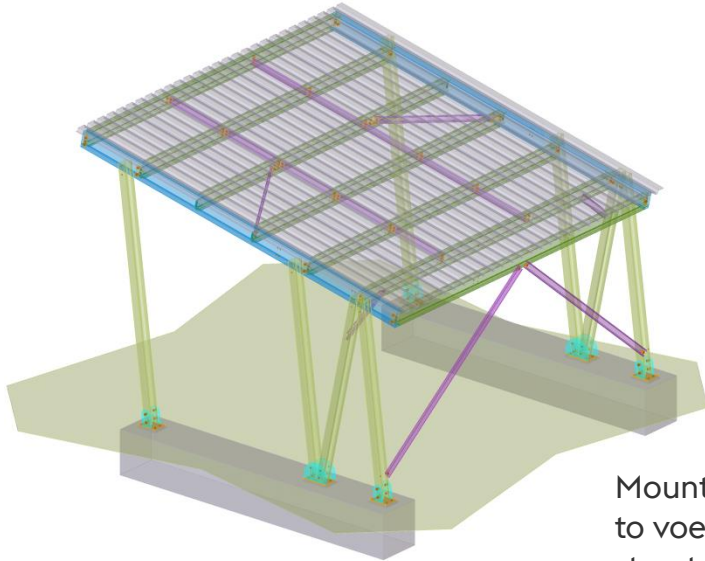
FlexPark SOUTH Heavy



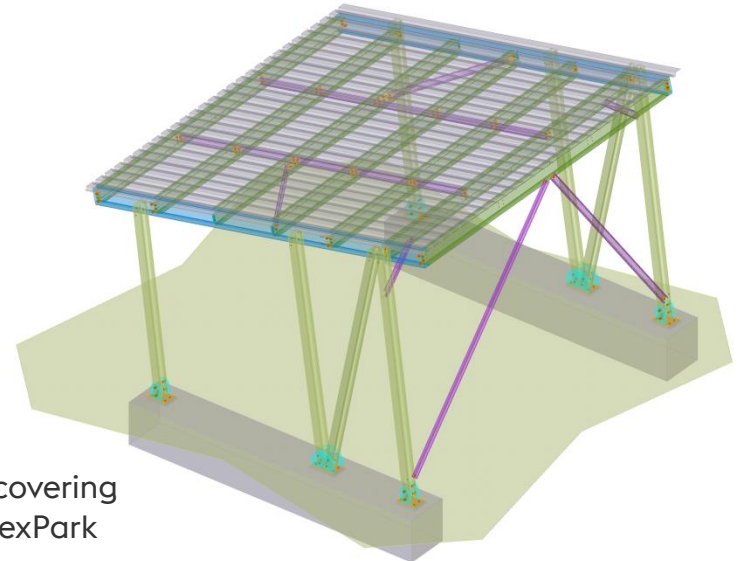
FlexPark NORTH Heavy

Tighten the bolts!

voestalpine SadeF Structure



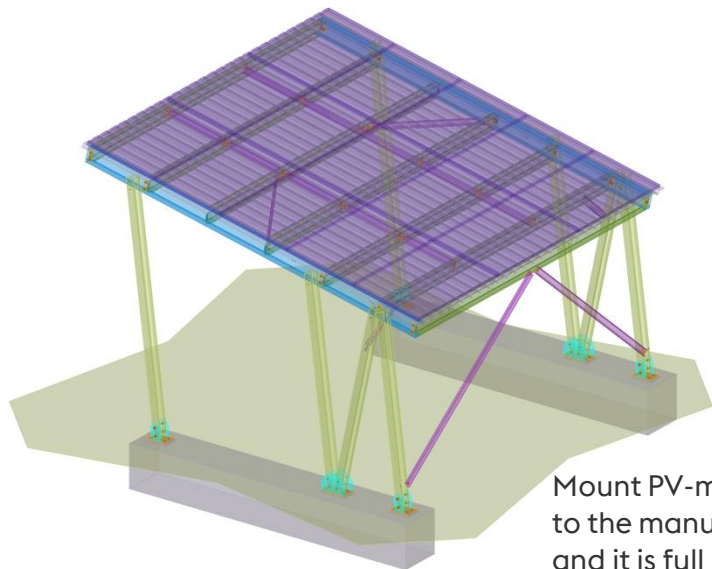
FlexPark SOUTH Heavy



FlexPark NORTH Heavy

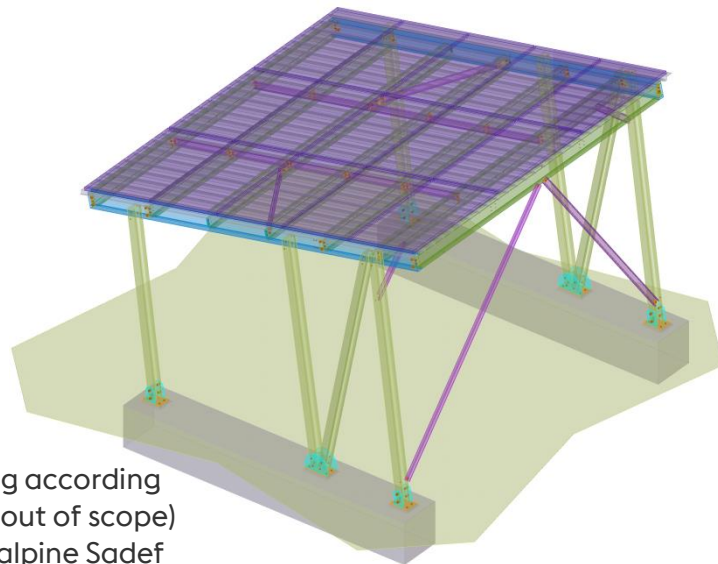
Mount steel sheet roofcovering to voestalpine SadeF FlexPark structure. Maximal distance between screws is 0,33m. Top of roof covering and screws is full responsibility of voestalpine SadeF customer.

voestalpine SadeF Structure



Mount PV-modules to roofcovering according to the manufacturer's instruction (out of scope) and it is full responsibility of voestalpine SadeF customer.

FlexPark SOUTH Heavy



FlexPark NORTH Heavy

voestalpine

ONE STEP AHEAD.

PLEASE REMEMBER

The structural drawings are giving more specific project information, and are anyway prior to this document!